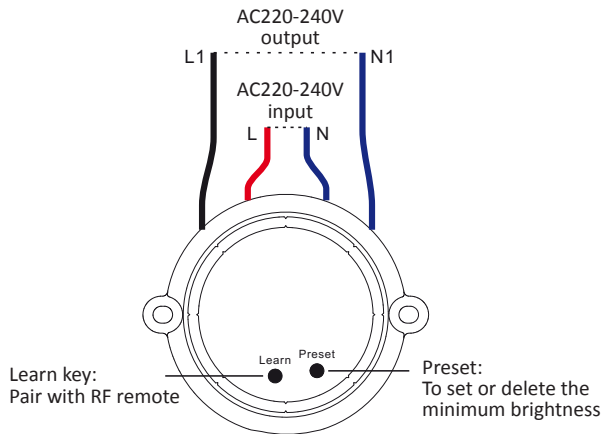


RADIM START KIT

100-240V 50/60Hz IP20

INTRODUCTION – IMPORTANT: Read all the instructions prior to installation

RADIM 100W BOXDIM

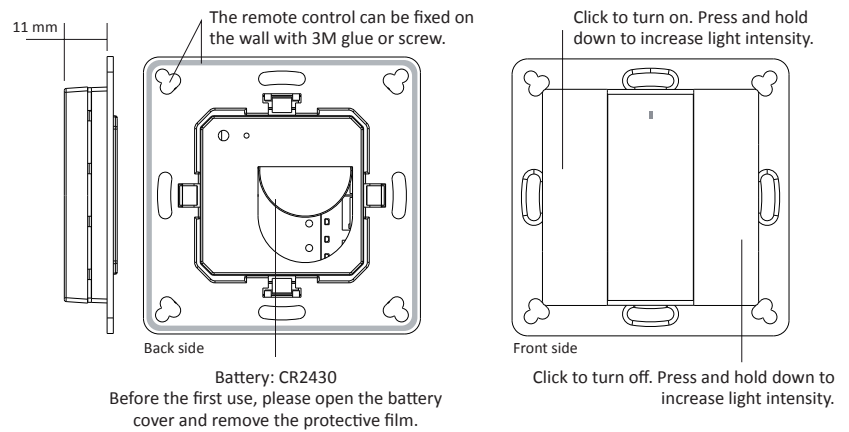


PRODUCT DATA

Input Voltage	220-240VAC
Output Voltage	220-240VAC
Output Current	1 x 0.45A max
Output Power	1 x 100W max
Measurements	45.5 x 19.5 mm

- Radio Frequency: 868/869.5/916.5/434mhz
- Protection class: IP20
- Safe and reliable full isolation design
- Triac / Trailing edge dimming
- Great compatibility with a variety of RADIM remote controls
- Innovative minimum brightness setting function
- To dim and switch dimmable LED lamps, traditional incandescent and halogen lights

RADIM RF 1CH WALLSWITCH



PRODUCT DATA

Output	RF signal
Operation Frequency	868/869.5/434MHz
Power supply	3V (1xCR2430 battery)
Operation temperature	0-40°C
Relative humidity	8% to 80%
Measurements	71.2 x 71.2 x 13.6 mm

- Control 1 zone of RF receiver
- Single colour controller
- Compatible with all universal series RF receivers
- 1 receiver can be paired by max 8 different remote controls.
- Protection class: IP20

SAFETY AND WARNINGS

- DO NOT install with power applied to device.
- DO NOT expose the device to moisture.
- This device contains a button lithium battery that shall be stored and disposed properly.

INSTALLATION

Do wiring according to the wiring diagram.

Pair with RF Receiver:

1. Click "Learn" key on RF receiver.
2. Click ON or OFF button on RF remote.
3. The LED lights connected with the receiver will flicker once when successfully paired.

Delete the pairing:

Hold down the "Learn" key button on the receiver for 4 seconds until the connected LED light on receiver flickers twice, indicating it is deleted.

The key part of this controller is a universal, extremely rotary standard switch element that can be integrated in numerous frames by different manufactures as listed:

BEKER	S1, B1, B3, B7 glass
GIRA	Standard 55, E2, Event, Esprit
JUNG	A500, Aplus
MERTEN	M-Smart, M-Arc, M-Plan

WIRING DIAGRAM

